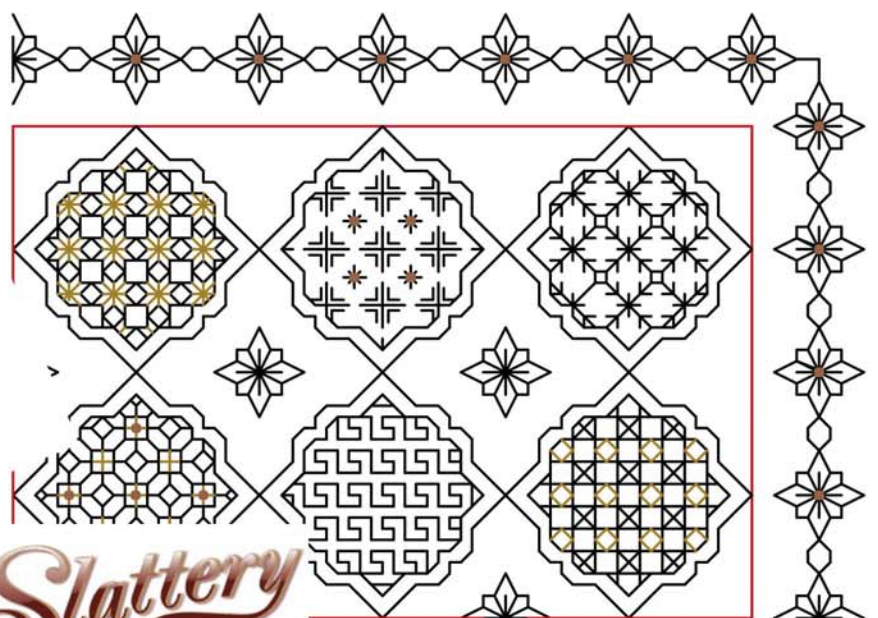
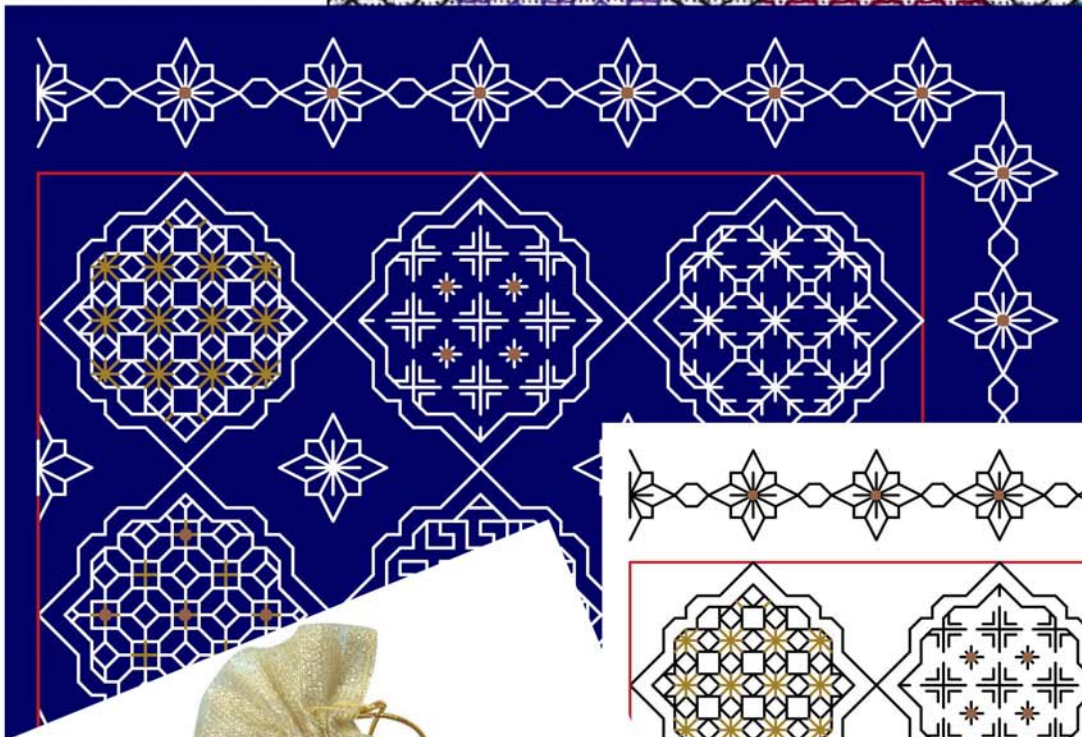
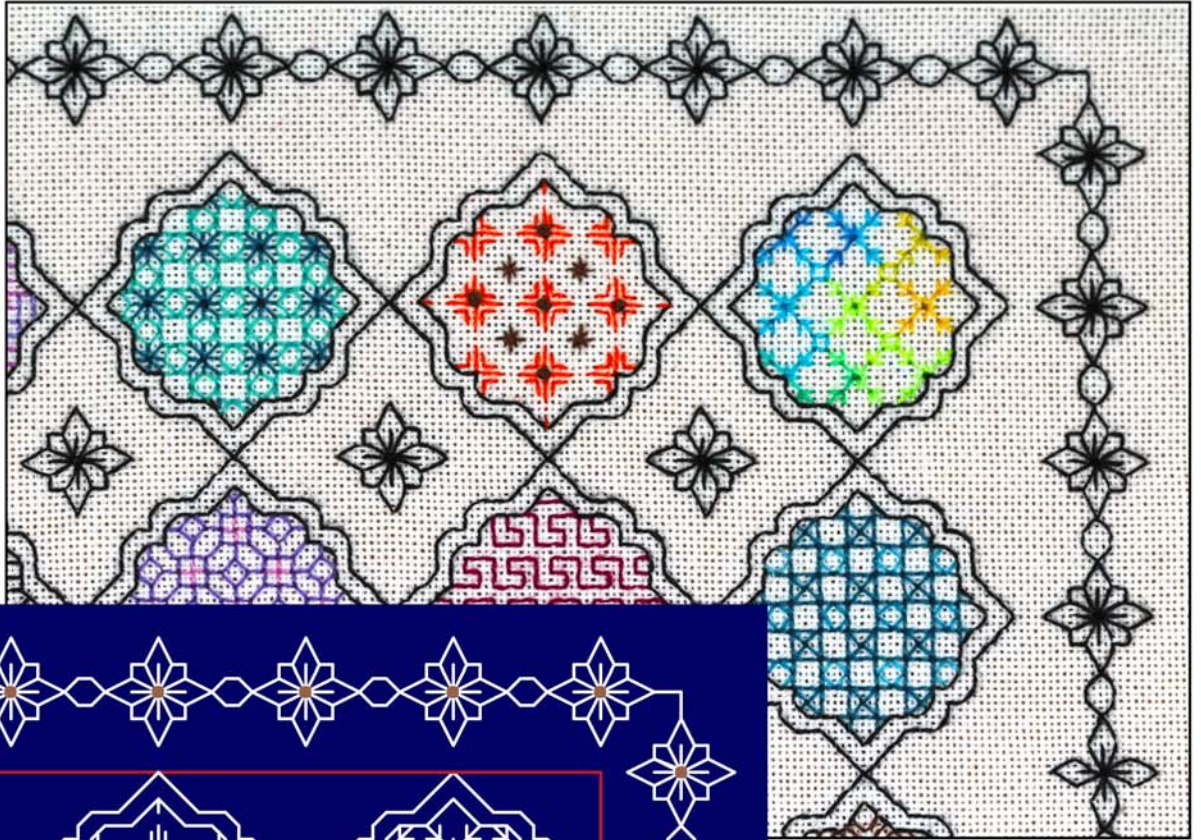


BOX OF DELIGHTS

Blackwork Journey - Designs by Elizabeth Almond

Block 2 Patterns 7 - 12



Slattery

Block 2 - Patterns 7 - 12

Grid Size: 80W x 58H

Design Area: 5.43" x 3.86" (76 x 54 stitches)

Three different colour schemes are included:

- Black and Gold with gold metallic thread and gold beads or copper thread and copper beads.
- Navy and white with gold metallic thread and gold beads or silver thread and silver or pearl beads.
- Coloured Delights - use scraps of thread to create each pattern in a different colour. Use variegated threads for Pattern 9.

Key - Block 2 Black and Gold



Threads:

DMC 310 Black, one skein

817 Coral red or sewing cotton for RED tacking lines

DMC Light Effects Metallic E3852 Dark Gold, one reel

Mill Hill Glass beads 557 Gold, one packet

Block 2 Navy

DMC White, one skein

DMC Light Effects Metallic E3852 Dark Gold, one reel or E168 Silver

Mill Hill Glass beads 557 Gold, one packet or 2022 Silver

Key - Block 2 Coloured

DMC Threads – various colours as desired. Follow the picture to help in colour selection.

Tapestry needle no.24

Beading needle

Small ring or frame if required.

Stitches used:

Back stitch – worked in one strand of thread over two threads of fabric unless otherwise indicated on the chart

Cross stitch - worked in two strands of thread, over two threads.

Colonial knots - worked in **two strands**

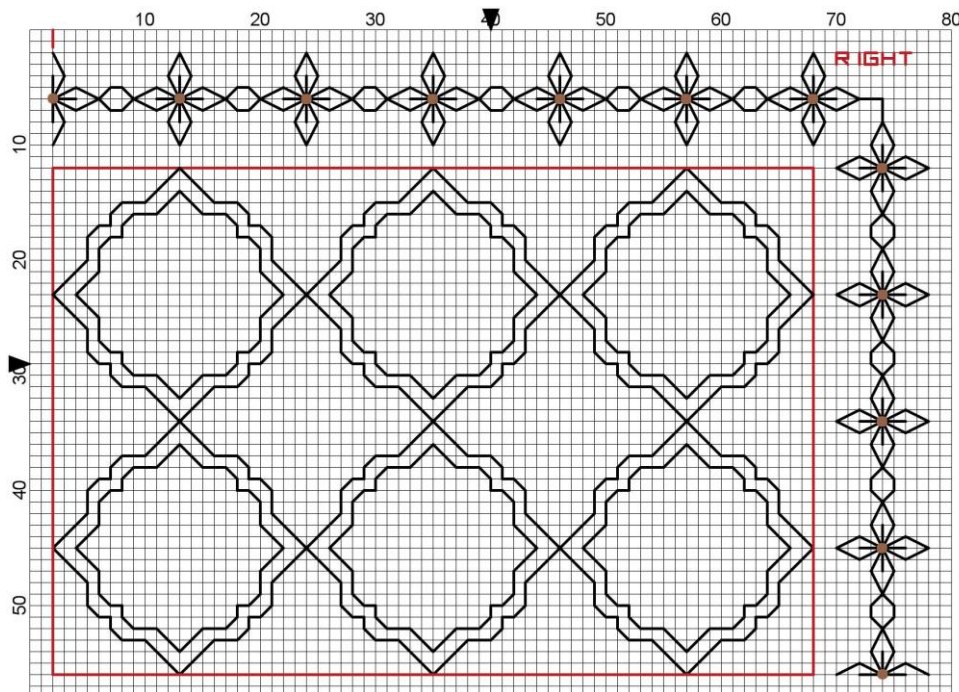
(See 'Introduction' for stitches (Page 7))

Method:

1. Follow on from Block 1 placing the next six patterns in the correct position on the chart. For ease of working there are SIX blocks of six designs. To help line the blocks up a tacking line in RED surrounds the six blocks. This is optional but will help to align the blocks correctly.

2. The outline for each sweet is worked in backstitch Black 310 or white as appropriate to the colour scheme.

The filler or 'diaper' patterns are added once the outline has been completed using the colour scheme chosen (see charts and jpgs.)



Block 2

Top right hand side showing the simple border

The framework is the same for all variations

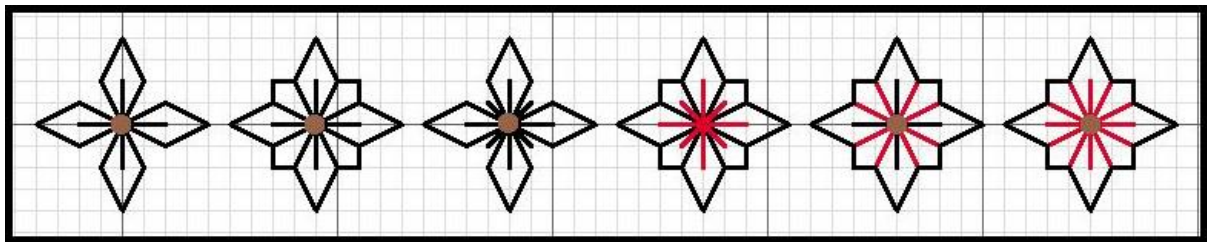
Using variegated threads can add a different dimension to the embroidery as shown in Sweet 9. Consider how many different colours are to be included and what impact they will make on the design overall.



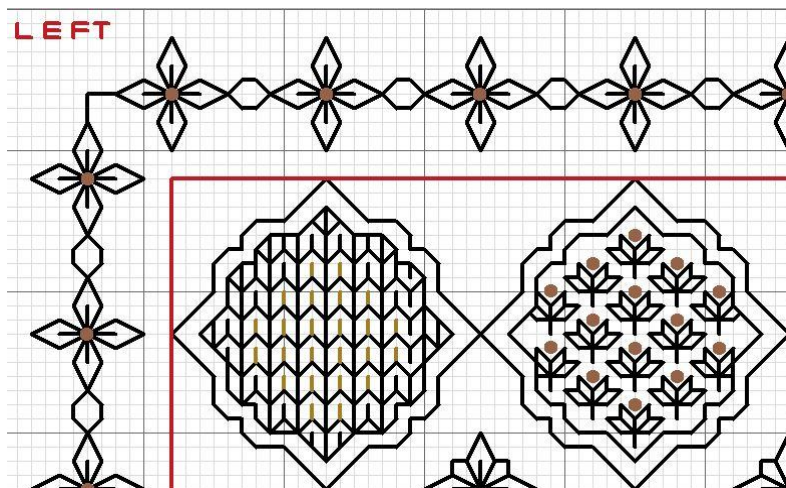
Borders and Corners in Box of Delights – Making a difference!

In **Block 1** two border chart variations were shown in the charts and pictures, one a very simple one and the other more detailed by adding eight extra stitches.

They are both worked from the same basic four petals but by adding eight extra stitches or adding and removing lines different effects can be achieved.



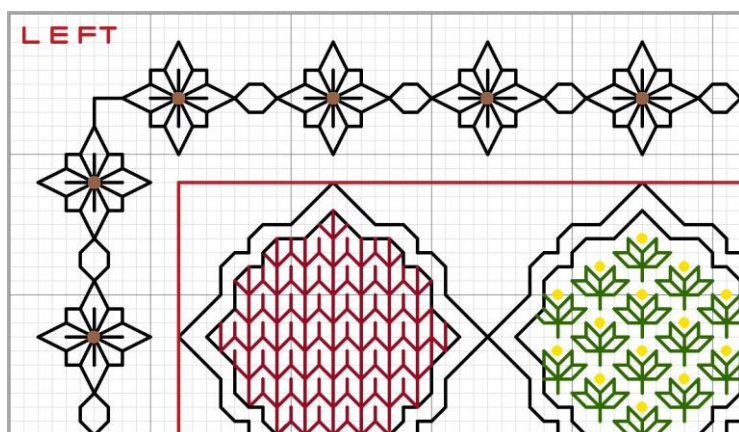
Variations on border motifs



LEFT

Details from Block 1

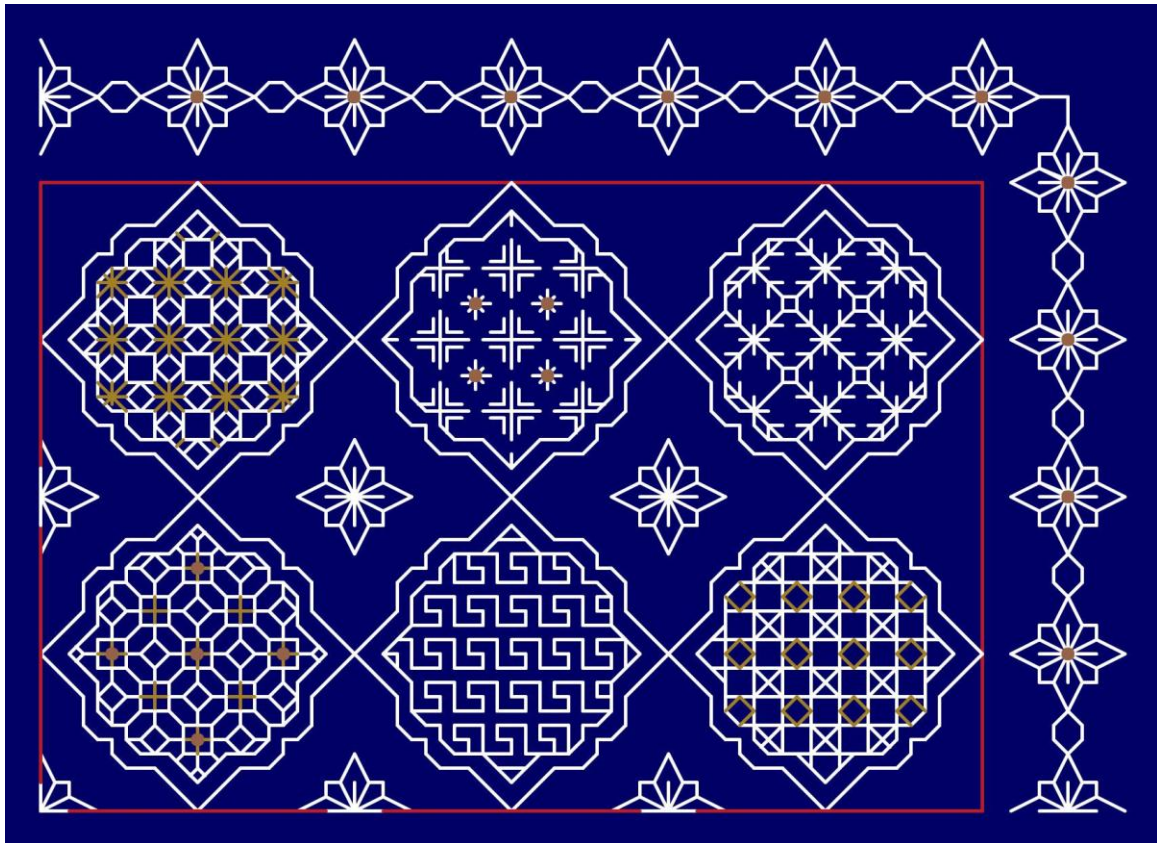
Simple border, four petals and gold bead, or



LEFT

Add eight stitches to create a 'flower' and develop the border of Blocks 1 and 2 at this stage or leave it until the whole embroidery has been completed.

Add the extra stitches to the border in **Block 2** if so desired to create a 'flower' border (See Block 2 Navy) or choose to work the simple border.

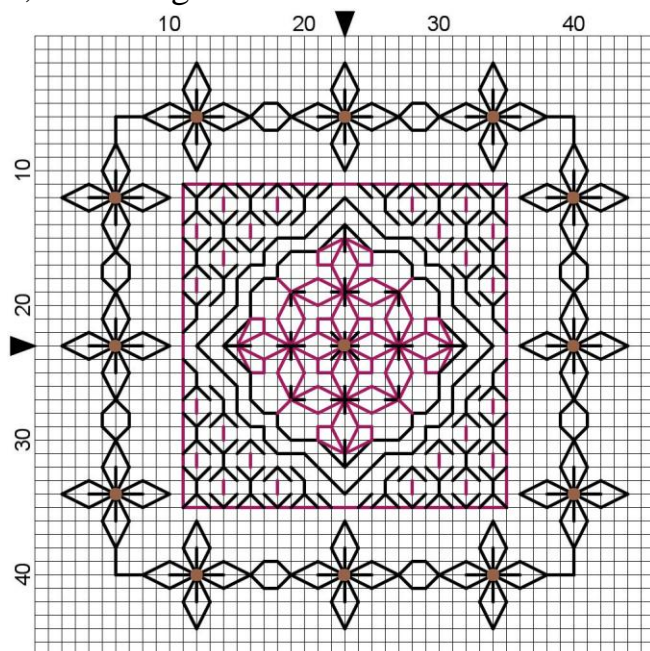


Block 2 Navy showing a more detailed border using extra stitches

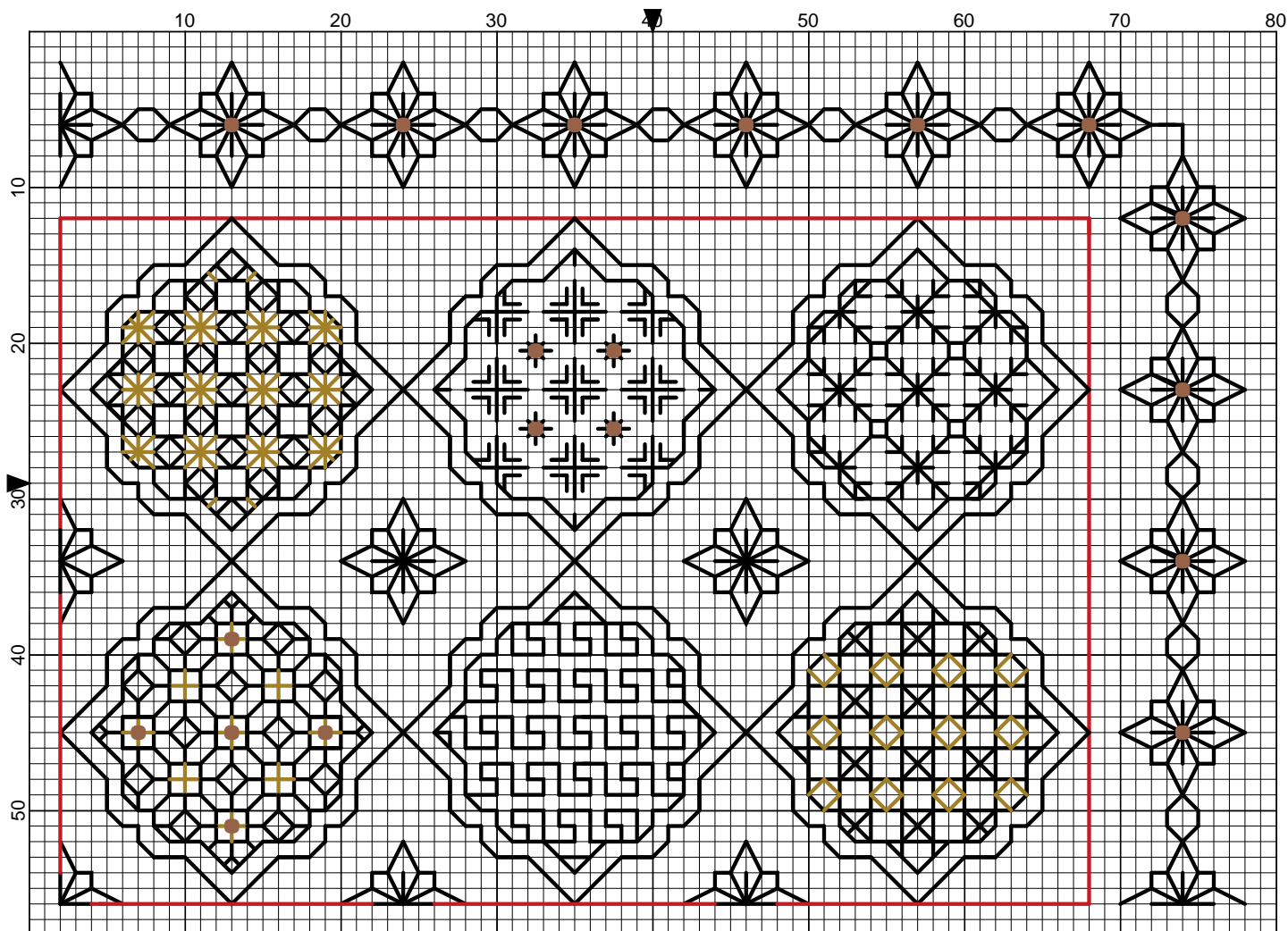
The gold metallic threads can be replaced by DMC E168 Silver and Mill Hill glass beads 2022 Silver in place of the gold beads.

Use the chart for Block 2 black and gold when working this version. This design is also suitable for black, emerald green or red fabric.

*Just for fun choose a different chocolate and create a small motif suitable for a card or gift tag.
For a small design keep the border simple.*

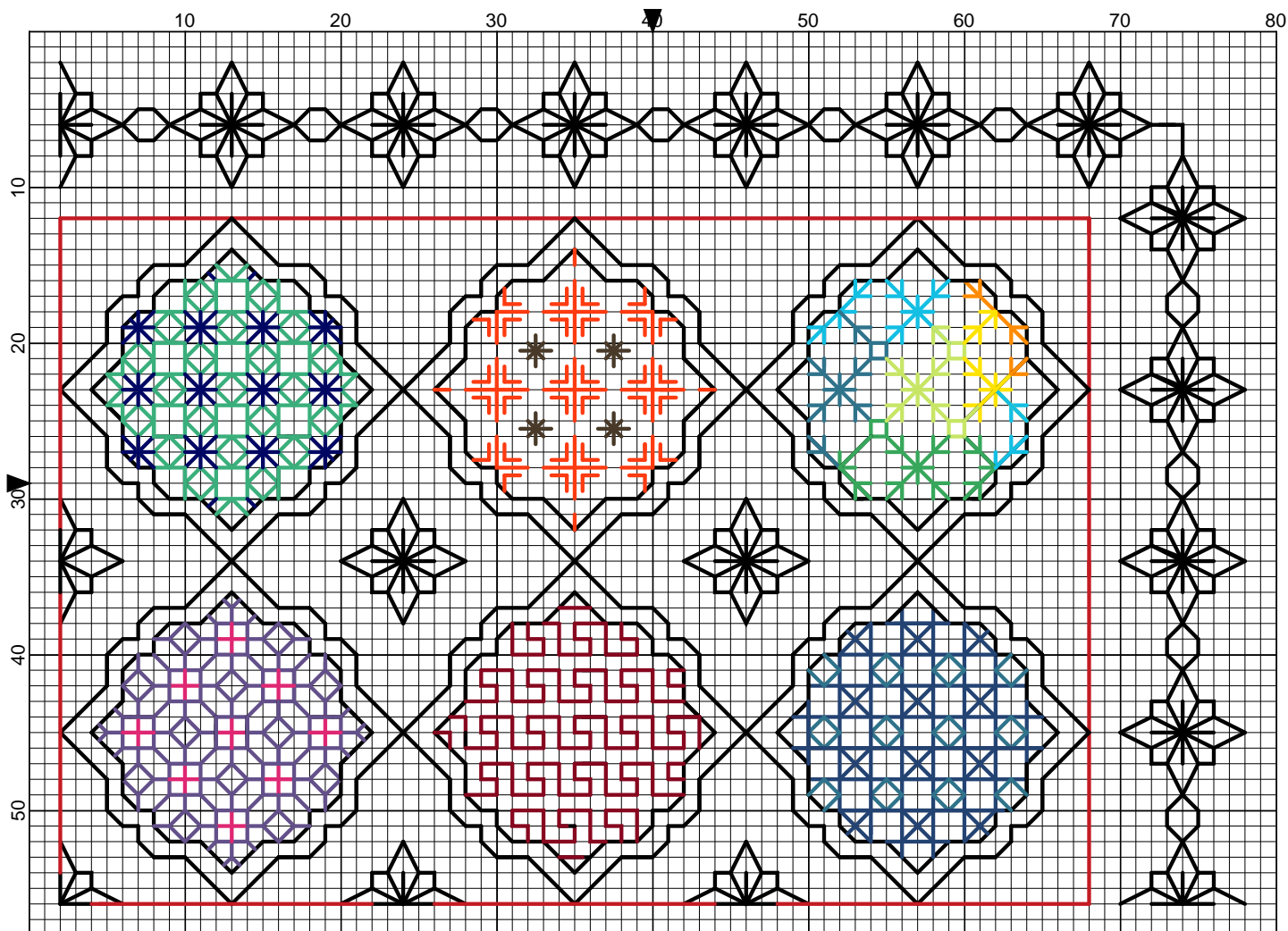


Block 2 Black and Gold Patterns 7 -12



Elizabeth Almond

Block 2 Colour Patterns 7 -12



Elizabeth Almond

Block 2 Colour Patterns 7 - 12

